

By Design: The Life and Art of Clara Anna Hatton (1901-91)

The Birger Sandzén Memorial Gallery, Lindsborg, KS

November 7, 2021-January 2, 2022

Clara Hatton's story begins and ends in Kansas. She was born and raised on a farmstead in Russell County near Bunker Hill and died in Salina, where she spent the last two decades of her life after retiring from Colorado State University in Fort Collins.

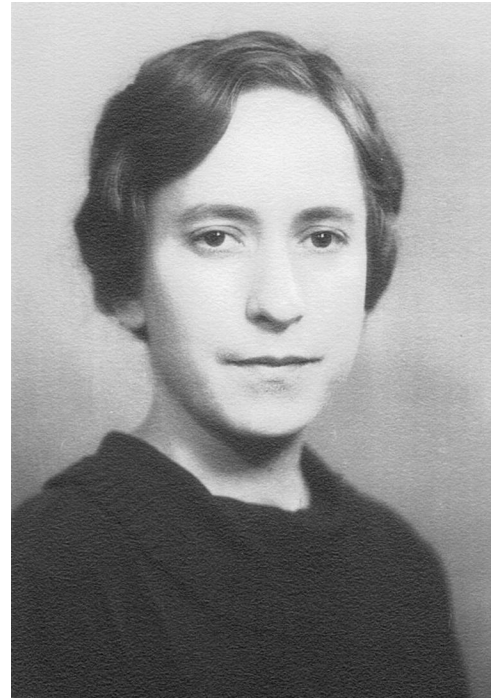
An artistic polymath, Hatton had an impressive command of a wide variety of media, including bookbinding, calligraphy and lettering, ceramics, metalwork, oil painting, printmaking, watercolor, and weaving. She developed her passion for design, handcrafts, the graphic arts, and painting at the University of Kansas in Lawrence, where she earned a BA in design (1926), a BFA in painting (1933), and was an instructor in the school's art department (1925-1936).

Hatton spent the 1935-36 academic year touring Europe and studying bookbinding, calligraphy, and printmaking in London at the Central School of Arts and Crafts and at the Royal College of Art. At the Central School of Arts and Crafts, she worked with direct descendents of some of the most consequential figures associated with the British Arts and Crafts movement.

A gifted professor and administrator at Colorado State University in Fort Collins (1936-66), Hatton created and built what is now that school's Department of Art and Art History. A lifelong learner, she used her 1944-45 sabbatical to earn an MFA in design and the graphic arts at the storied Cranbrook Academy of Art in Bloomfield Hills, Michigan, the fountainhead of mid-century design in America.

Hatton's commitment to art education was steadfast throughout her career and beyond. From her first teaching job in a one-room schoolhouse at age eighteen to her four decades of university teaching, Hatton inspired generations of students. In retirement, during her final years in Salina (1970-91), she continued to selflessly share her vast store of knowledge and skill, presenting lectures, workshops, and courses at numerous local art, educational, and social organizations.

This exhibition was organized by the Clara Hatton Center, a Kansas nonprofit that works with arts and educational institutions to advance its mission **to foster an awareness and understanding of the life and work of Clara Anna Hatton (1901-91) and her contributions to the visual arts culture of Kansas and the Mountain-Plains region.**



For more information, contact us at info@clarahatton.art

CHECKLIST OF THE EXHIBITION

Unless otherwise noted, all works are by Clara Anna Hatton (1901-91) and from the collection of Ora Hatton Shay.

Book bindings

Lewis Carroll, *Alice's Adventures in Wonderland* (New York: Three Sirens Press, ca. 1930), binding date unidentified, bound in full red leather (goat)

Elizabeth Robins Pennell and Joseph Pennell, *The Art of Whistler* (New York: Modern Library, 1928), binding date unidentified, bound in full leather (goat) with Cockerell endpapers

The Book of Common Prayer (Oxford: Oxford University Press, 1944), binding date unidentified, bound in full leather (goat)

The Book of Ruth, text scribed 1936, binding date unidentified, bound in full leather (goat)

Aesop, *A Fable*, bound ca. 1979 in full leather, collection of Don and Carol Hatton

A Trial Page, 1979, pen and ink with hand coloring on paper, collection of Don and Carol Hatton

William Shakespeare, *King Richard II* (London: J. M. Dent, 1905), binding date unidentified, bound in full red leather (oasis morocco goat) with Cockerell endpapers

Henry Wadsworth Longfellow, *Poems* (New York: A. L. Burt, 1901), bound 1925 in full leather (levant morocco goat)

William Shakespeare, *Romeo and Juliet* (London: J. M. Dent, 1908), binding date unidentified, bound in full leather (goat) Cockerell endpapers

The Very Wise Minnow, text scribed by C. Hatton September 1935, binding date unidentified, bound by C. Hatton in full leather (goat)

Outline of Informal Talk given by Carl Milles to Kingswood girls at Presentation of Rings, January, 1945; hand-set and decorated with wood engravings by Clara Hatton

Portfolio for Milles outline, by Clara Hatton

Calligraphy

The Book, 1969, pen and ink on paper, collection of Don and Carol Hatton

Ceramics

Bowl, 1956, glazed ceramic

Bowl, date unidentified, glazed ceramic

Pot, date unidentified, glazed ceramic, Gregory Allicar Museum of Art, CSU, gift of Ms. Dawn Kruger, 2012.3

Vase, 1959, glazed ceramic

Vase, date unidentified, glazed ceramic

Metalwork

Clip with monogram (GES), ca. 1930, silver with patina

Clip with monogram (OHS), ca. 1930, silver with patina

Necklace, date unidentified, silver with red stone, collection of Don and Carol Hatton

Pin, date unidentified, silver with black opal and copper alloy

Paintings and Drawings

Canyon Landscape, Colorado, date unidentified, oil on linen over board, collection of Don and Carol Hatton

Colorado Landscape, date unidentified, oil on linen over paperboard, family of Louis and Josephine (Dauber) Schulte

Colorado Landscape, 1976, watercolor with graphite underdrawing on paper, collection of Brent and Clare Gustin

Dyche Hall, KU, date unidentified, watercolor on paper, collection of Helen and Dick Rewey

Fisherman's Breakfast, ca. 1965, oil on linen, Gregory Allcar Museum of Art, CSU, 2006.120, conserved with support from the Greenwood Fund

Grandma Hatton and Little Ora, ca. 1946, charcoal on wove paper

Kansas Landscape, date undetermined, oil on canvas board, collection of Brent and Clare Gustin

Landscape, 1940, watercolor with graphite underdrawing on wove paper

Picking Dandelions, 1928, oil on paperboard, collection of Don and Carol Hatton

Pine and Aspens, 1930s, oil on linen over paperboard, collection of Don and Carol Hatton

Red Tree, 1940, oil on canvas board

Rockport Harbor, ca. 1929, oil on canvas board

Self Portrait, 1976, oil pastel on paper

Still life with floral arrangement and black pottery, 1940, watercolor with graphite on paper, collection of Susan Elizabeth Gillin

Sweet Peas, 1931, watercolor and pen and ink with graphite on paper, family of Louis and Josephine (Dauber) Schulte

Yucca and Hills, date unidentified, oil on linen, family of Louis and Josephine (Dauber) Schulte

Prints

Afternoon Nap, 1936, etching on wove paper, collection of Helen and Dick Rewey

Alley, 1928, etching on paper

Mrs. Alpaugh at the Loom, 1945, etching with drypoint on wove paper

Barn and Yucca, ca. 1935, etching and aquatint with drypoint on laid paper, Gregory Allcar Museum of Art, CSU, 2006.116

Bowersock Mills, 1936, drypoint on machine-laid paper

Early Settler's Home, ca. 1937, woodcut on mulberry paper, family of Louis and Josephine (Dauber) Schulte

Evening, 1929, aquatint with etching and drypoint on laid paper

Study for Evening, ca. 1929, graphite on wove paper

Study for Evening, ca. 1929, ink with graphite on wove paper

"Far above the golden valley," ca. 1934, etching on paper

Gloria in excelsis Deo, date unidentified, block print with gold powder on laid paper

Home of an Early Settler, ca. 1937, printed after 1970, etching on paper

Kuh Wagon, 1935, engraving on laid paper

The Leopard and the Fox, 1944, engraving and letterpress on wove paper

Old Mill, Lawrence, Kans., ca. 1930, etching on paper, collection of Don and Carol Hatton

Peace and Happiness at Christmas Time & Throughout the Year, 1956, block print with gold leaf on wove paper

Portrait Elsa, 1935, engraving on wove paper

Rock Barge, ca. 1929, printed after 1970, etching on wove paper, family of Louis and Josephine (Dauber) Schulte

Season's Greetings, 1941, etching on wove paper

Shambles Restaurant, 1935, printed after 1970, Wood engraving on wove paper, Gregory Allicar Museum of Art, CSU, John and Yvonne Berland, 2006.337

Wood block for *Shambles Restaurant*, 1935, collection of Don and Carol Hatton

This Little Deer from Cranbrook Bring's Season's Greetings, ca. 1944, block print with hand coloring on card stock

Tree in Winter, ca. 1932, etching on wove paper

After Sassoferrato (Giovanni Battista Salvi, 1609-85), *The Virgin in Prayer*, 1936, mezzotint on wove paper

Windy Monday, ca. 1934, linoleum cut on mulberry paper

Yucca, 1937, etching on paper, collection of Don and Carol Hatton

Textiles

Table runner (blue), date unidentified, woven cotton, collection of Todd Goodheart

Table Runner (red), date unidentified, woven cotton, collection of Todd Goodheart